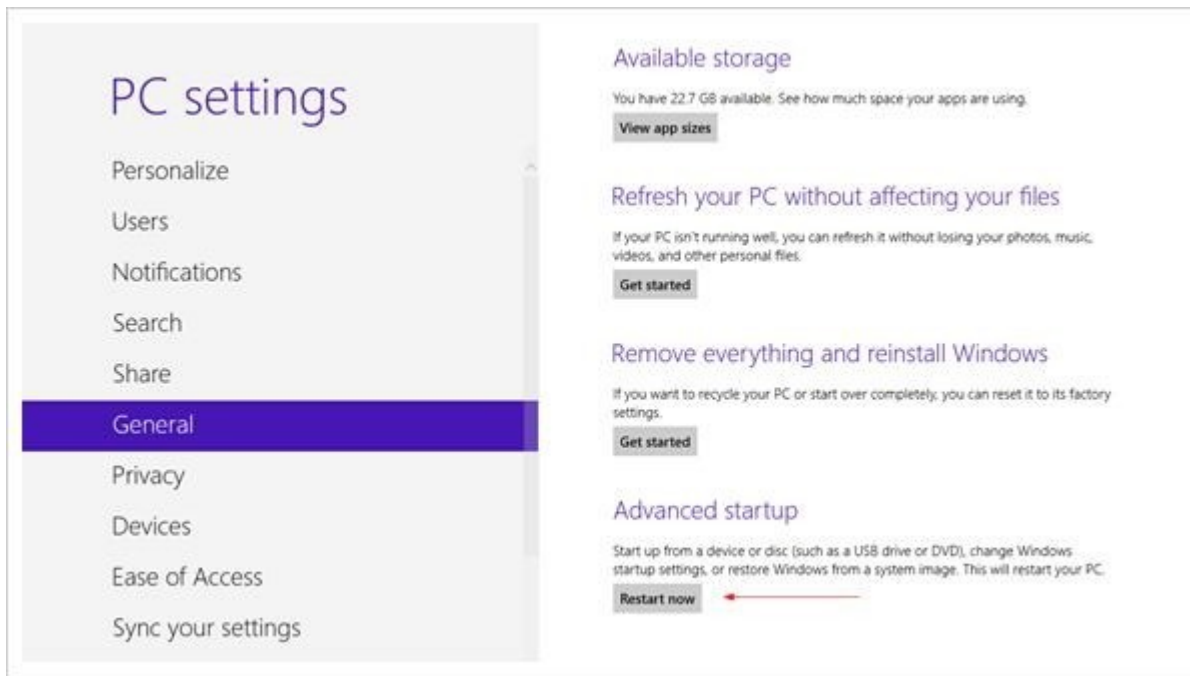
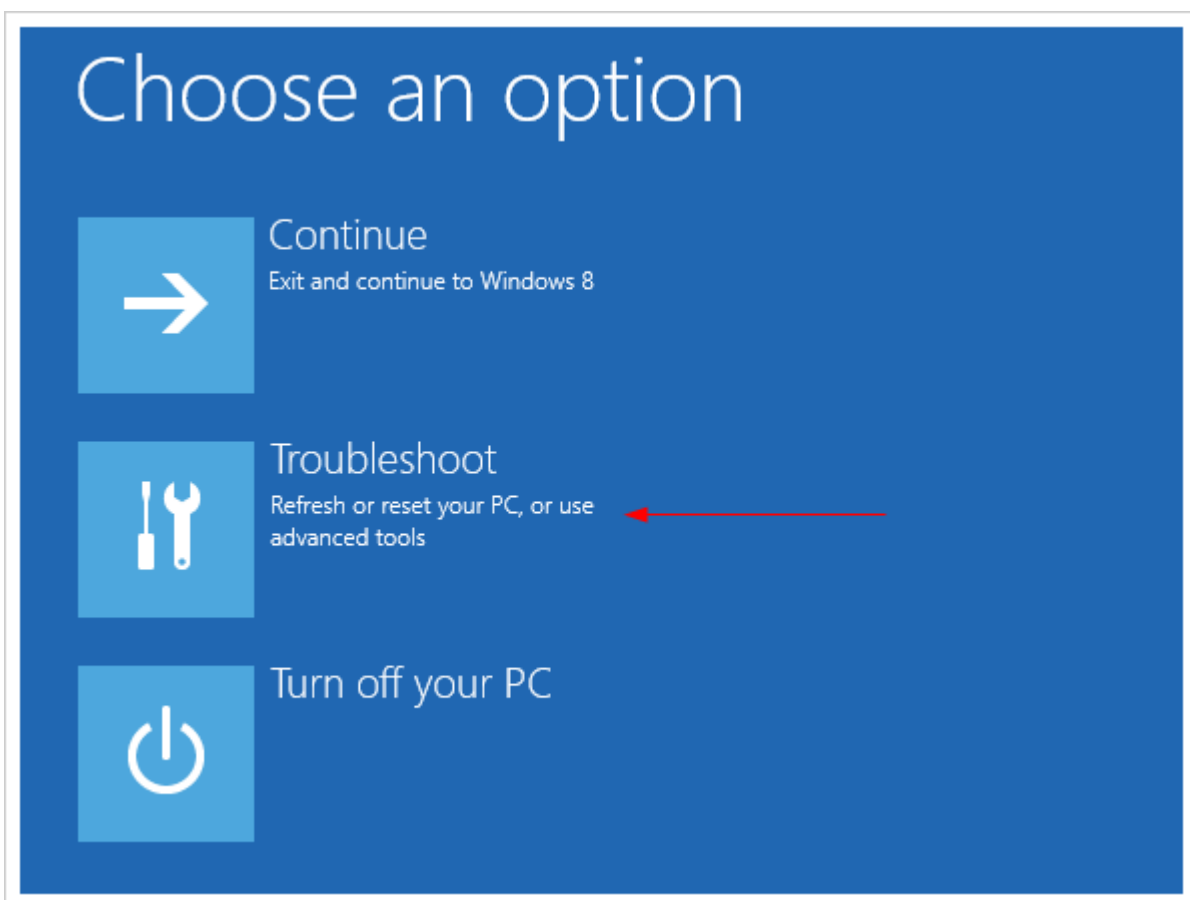


First, press **win + I** to launch the charm bar, and click **Change PC Settings** at the bottom.

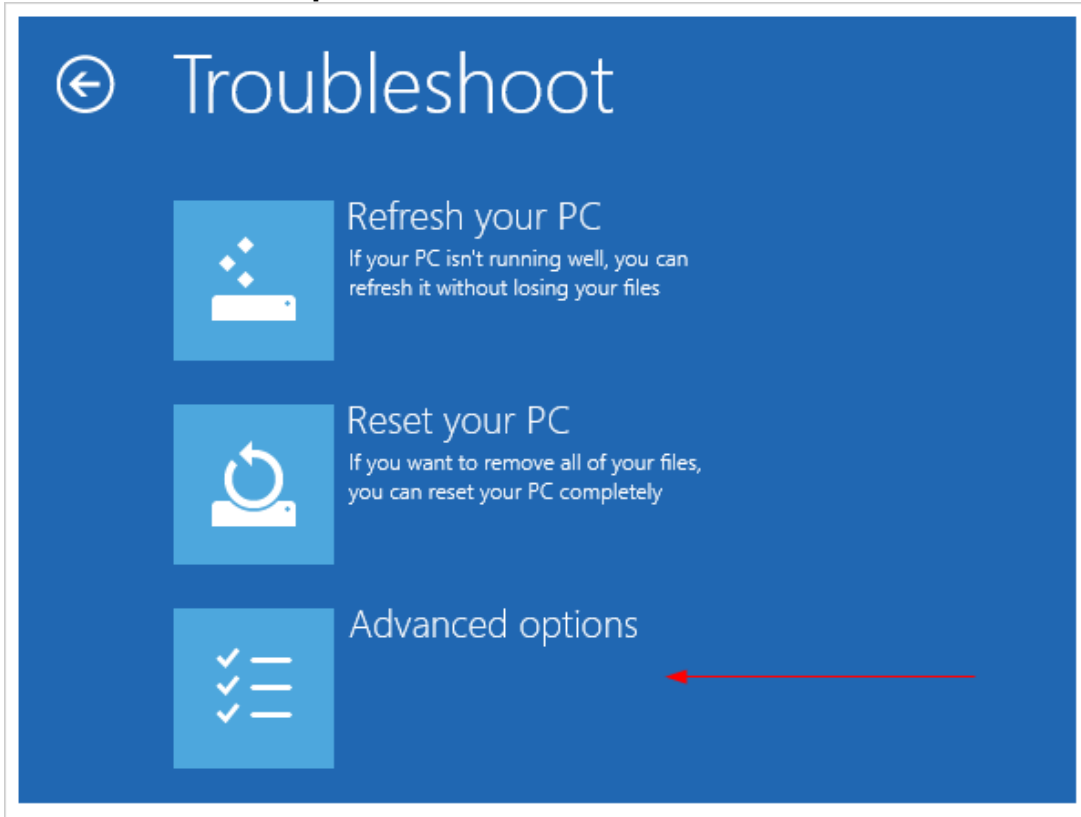
Then, go to **General**, and scroll to the bottom of the page, click **Restart Now** button under **Advanced Startup** section. Remember to save all your work first before clicking it.



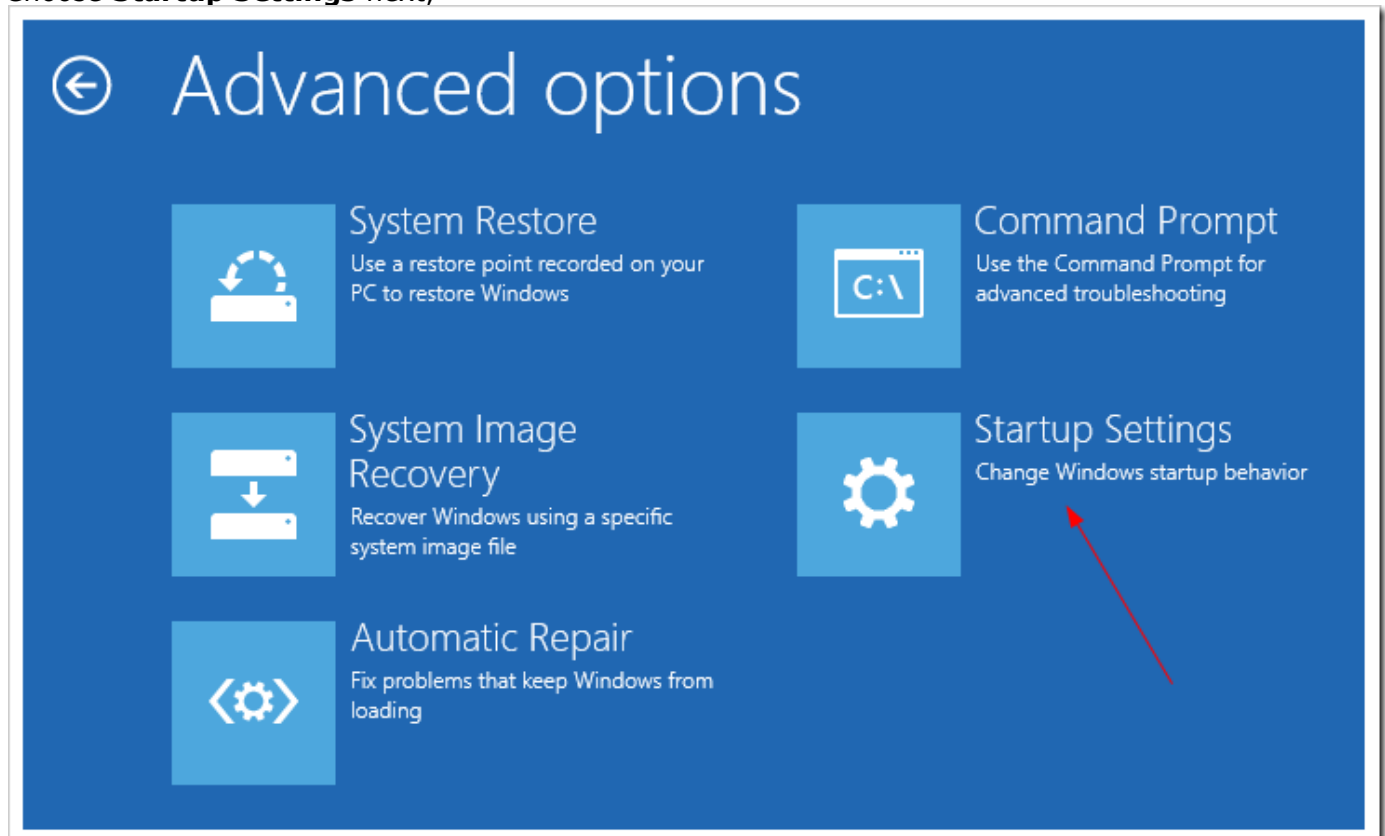
The computer reboots to a startup menu, in which click **Troubleshoot**.



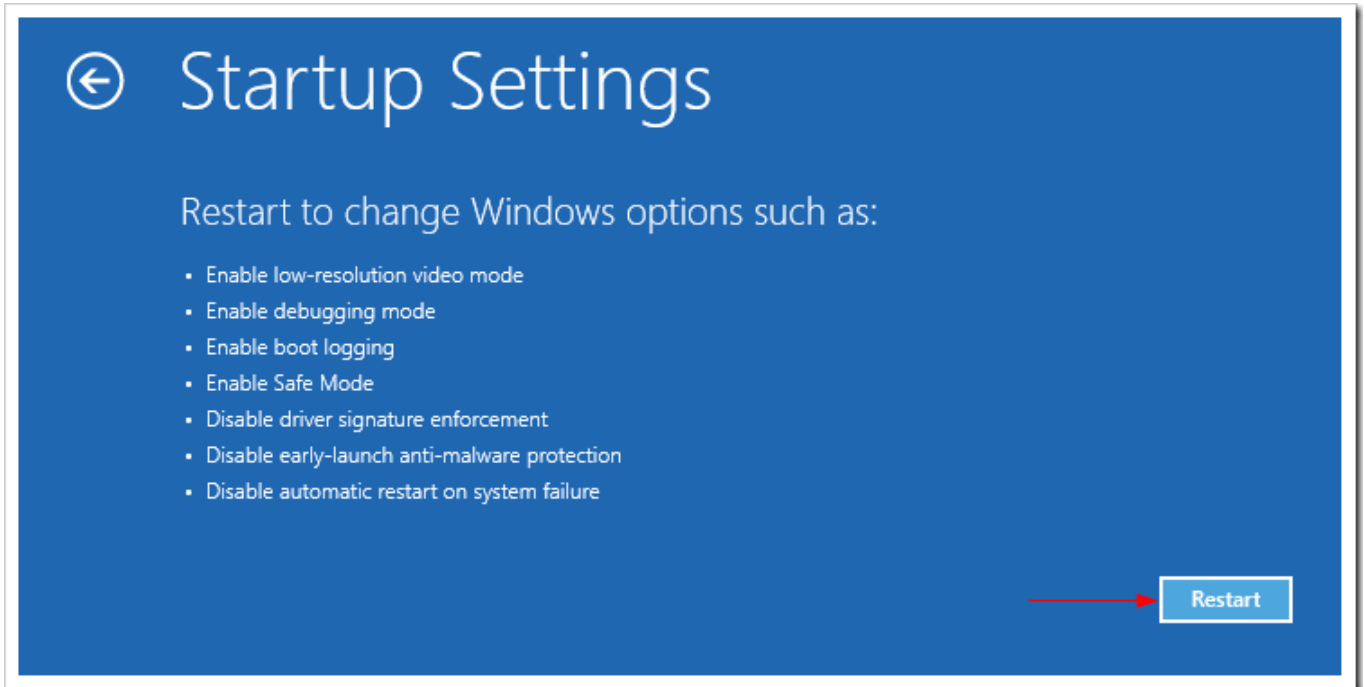
And click **Advanced Options** at next screen.



Choose **Startup Settings** next,



And click **Restart** button.



The computer reboots and prompts another menu to choose. One of the items is to **Disable driver signature enforcement**. Press number **7** or **F7** to continue booting to Windows 8 with digital sign enforcement disabled.

Startup Settings

Press a number to choose from the options below:

Use number keys or functions keys F1-F9.

- 1) Enable debugging
- 2) Enable boot logging
- 3) Enable low-resolution video
- 4) Enable Safe Mode
- 5) Enable Safe Mode with Networking
- 6) Enable Safe Mode with Command Prompt
- 7) Disable driver signature enforcement 
- 8) Disable early launch anti-malware protection
- 9) Disable automatic restart after failure

Press F10 for more options

Press Enter to return to your operating system

And then I was able to get the Windows Security warning window offering me to install this driver anyway.



It was successful! Restart computer once again to re-enable the digital sign enforcement.

I would suggest changing the UAC settings first to see if the Install Anyway window prompts out. The solution showing off in this post should be the last resort to try out. And make sure the driver you are about to install is safe, though not digitally signed.