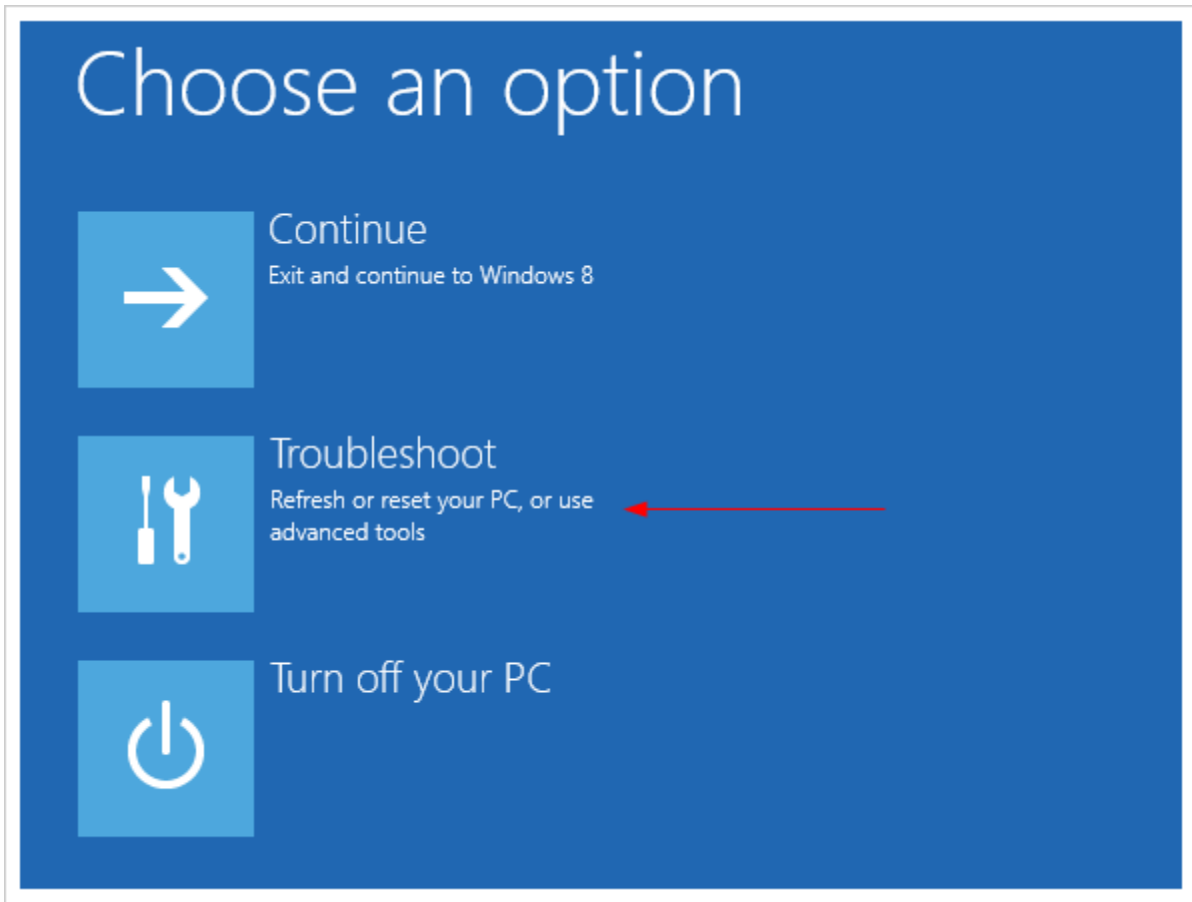


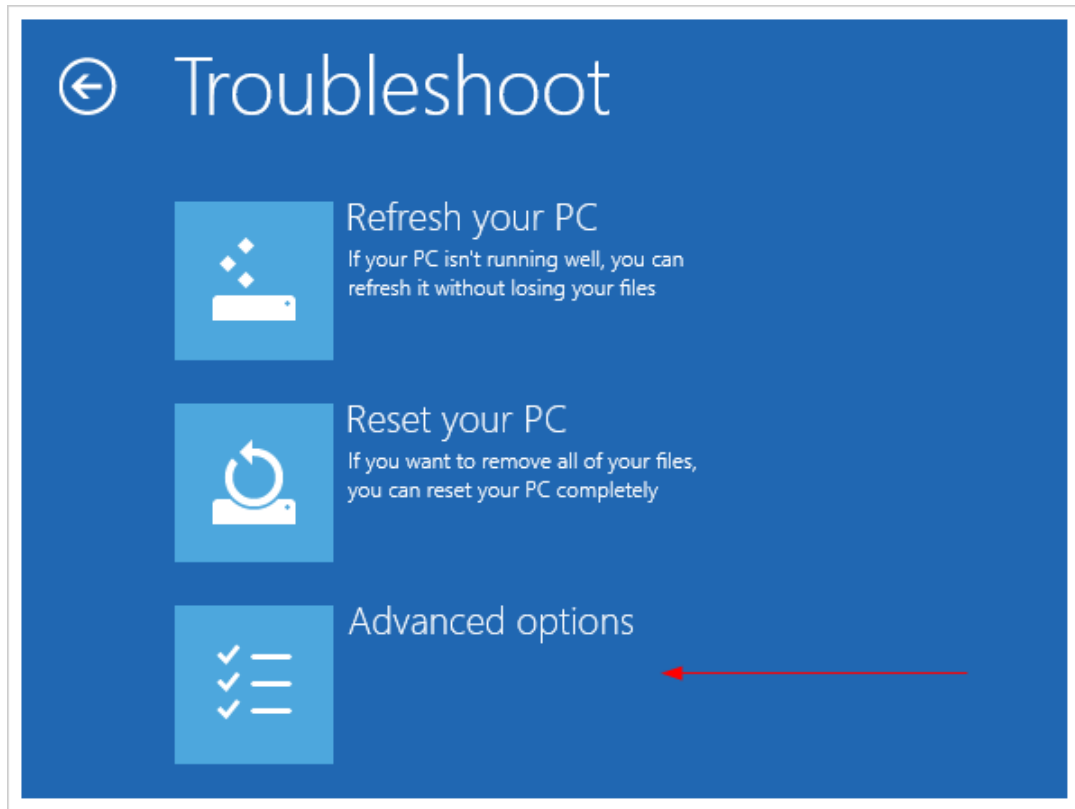
First, click on the Start Menu in the bottom left hand corner

And then click Power. You will then see Sleep, Shut Down and Restart. Please press **Shift on the keyboard and The Restart Option.**

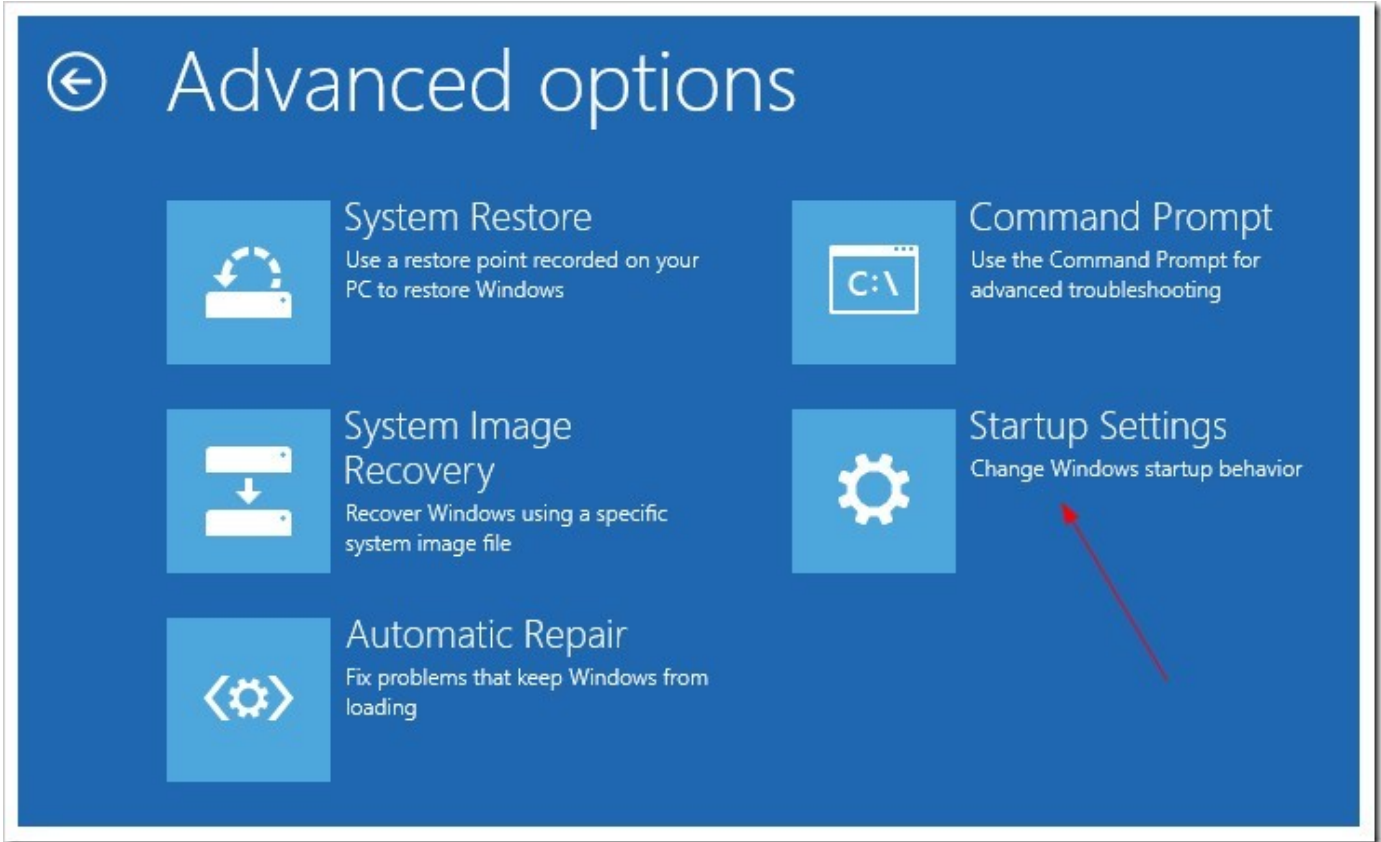
The computer reboots to a startup menu, in which click **Troubleshoot.**



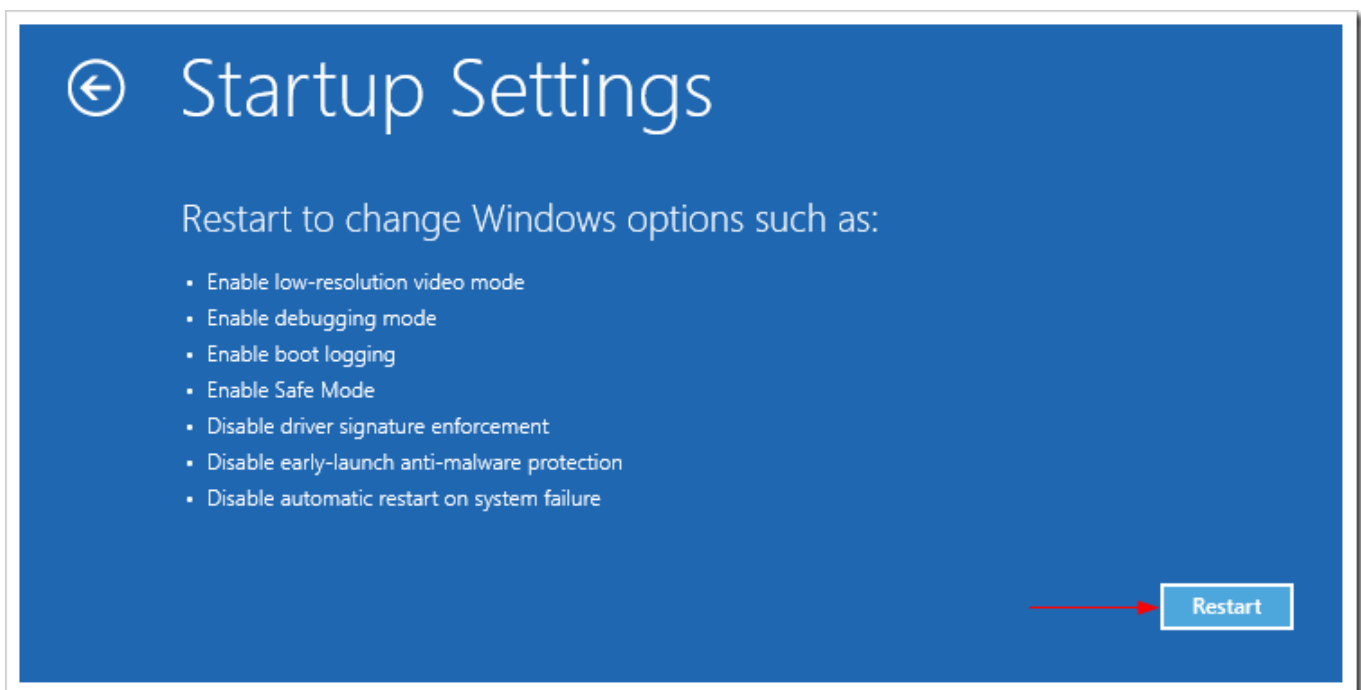
And click **Advanced Options** at next screen.



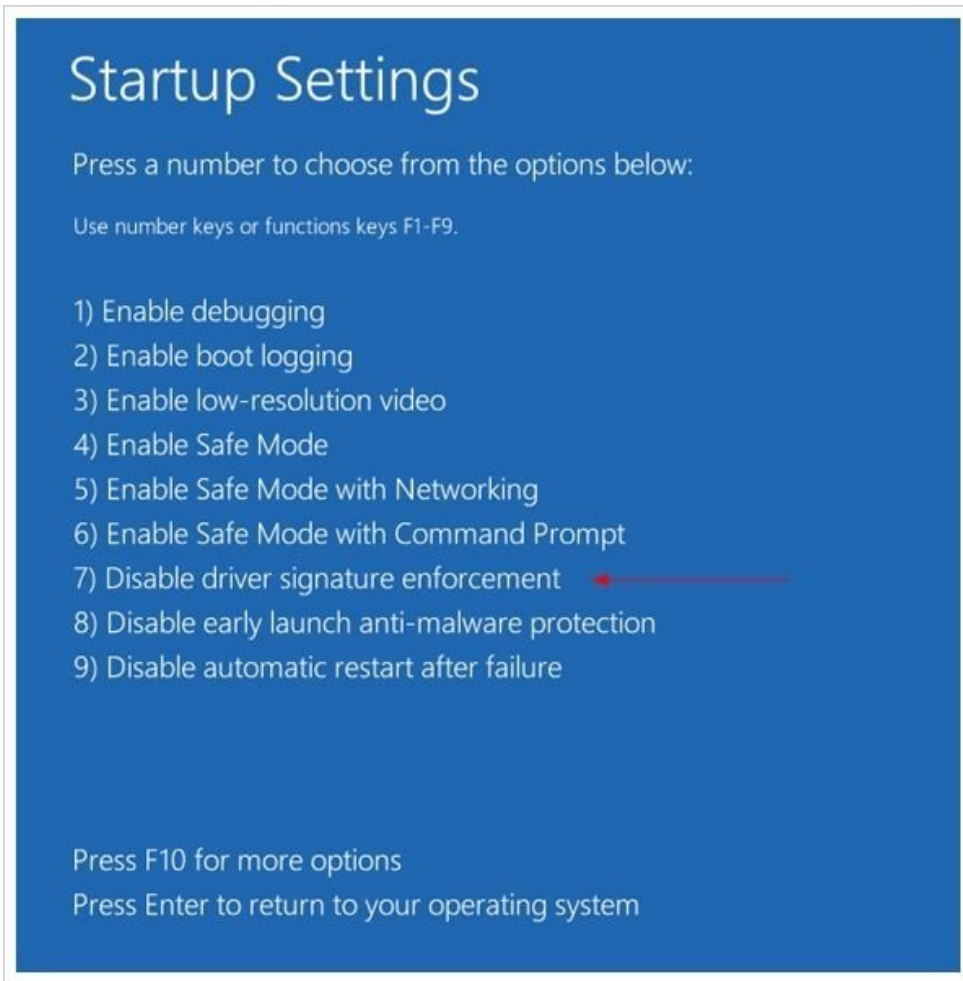
Choose **Startup Settings** next,



And click **Restart** button.



The computer reboots and prompts another menu to choose. One of the items is to **Disable driver signature enforcement**. Press **F7** to continue booting to Windows 8.1 with digital sign enforcement disabled.



And then I was able to get the Windows Security warning window offering me to install this driver anyway.



It was successful! Restart computer once again to re-enable the digital sign enforcement.

I would suggest changing the UAC settings first to see if the Install Anyway window prompts out. The solution showing off in this post should be the last resort to try out. And make sure the driver you are about to install is safe, though not digitally signed.